



McDonnells
suppliers to the food trade

BUTCHERS CATALOGUE

Edition 2024 - 1



www.mcdonnells.ie



sales@mcdonnells.ie



McDonnells
suppliers to the food trade

McDonnells are a long established specialist in the food trade. We offer a wide range of food seasonings, equipment and sundries to the butchers, abattoir and factory, deli, chef, fish, catering, bakery and retail sectors throughout Ireland, Northern Ireland and the UK.

We are constantly updating our product ranges in line with HACCP requirements and product innovations.

McDonnells offer the following services: Knife sharpening and engraving, knife safety training, counter ticketing design, counter layout and display design, humane stunner use and maintenance.

Please contact our sales team should you require items not shown in this catalogue.

Tel: +353 1 6778123

Fax: +353 1 6774491

email: sales@mcdonnells.ie

Customers are also welcome to visit our showrooms:

Unit 15

Northern Cross Business Park

North Road

Dublin 11

D11 W5WN

Monday - Friday 8.00am to 5.00pm

Visit our website at **www.mcdonnells.ie** to order on-line.



Terms and Conditions

Transaction payments can be made by cash, cheque, postal or money order, on-line banking or major Debit and Credit Cards. All goods sold are subject to our standard terms and conditions of sale. These can be viewed and downloaded from our website www.mcdonnells.ie or sent by email or post.

Delivery

All orders received before 3pm daily will be delivered as follows:

All Ireland: 24-48 Hours

All UK: 48-72 Hours

Please contact us for International delivery rates.

Product Returns Policy

Damages or shortages must be reported within 24 hours of receipt of the goods. Should goods need to be returned, notification must be in writing within 3 days of receipt of same, otherwise you will incur a restocking charge.

Any special orders cannot be exchanged or returned.



www.mcdonnells.ie



sales@mcdonnells.ie

Professional Butchers Knives made in Germany



Ergogrip Knives

- Hygienic
- Fatigue free handle
- HACCP colours
- Ergonomic



D8225915
6" Straight Boning Knife



D8299113
5" Rigid Curved Boning Knife



D8299115
6" Rigid Curved Boning Knife



D8298213
5" Semi-flexi Boning Knife



D8298215
6" Semi-flexi Boning Knife



D8298113
5" Full-flexi Boning Knife



D8298115
6" Full-flexi Boning Knife

Expertgrip Knives

- Polished edge
- Soft grip
- Open Handle
- Safe non Slip



D8225915
6" Straight Boning Knife



D8219113
5" Rigid Curved Boning Knife



D8219115
6" Rigid Curved Boning Knife



D8218213
5" Semi-flexi Boning Knife



D8218215
6" Semi-flexi Boning Knife



D8218113
5" Full-flexi Boning Knife



D8218115
6" Full-flexi Boning Knife

WORLD'S BEST STEAK KNIVES & CHOPPERS



D8238530
12" Butchers Steak Knife
D8238530
10" Butchers Steak Knife



D8234826
10" Butchers Steak Knife



D8225330
12" American Steak Knife
D8225326
10" American Steak Knife



D8242521K
8" Butchers Knife with
Kullen

The steak knife has a long and curved blade that allows you to make a long, pulling cut. It is used to cut large pieces of meat. You can also use it to remove skin and fatty fibres. It is very suitable for shearing and covering. The steak knife is used as a versatile tool in slaughterhouses and butcher's shops.



D8200618
7" Straight Wide Boning
Knife



RF68383
22cm Cleaver
Red Handle

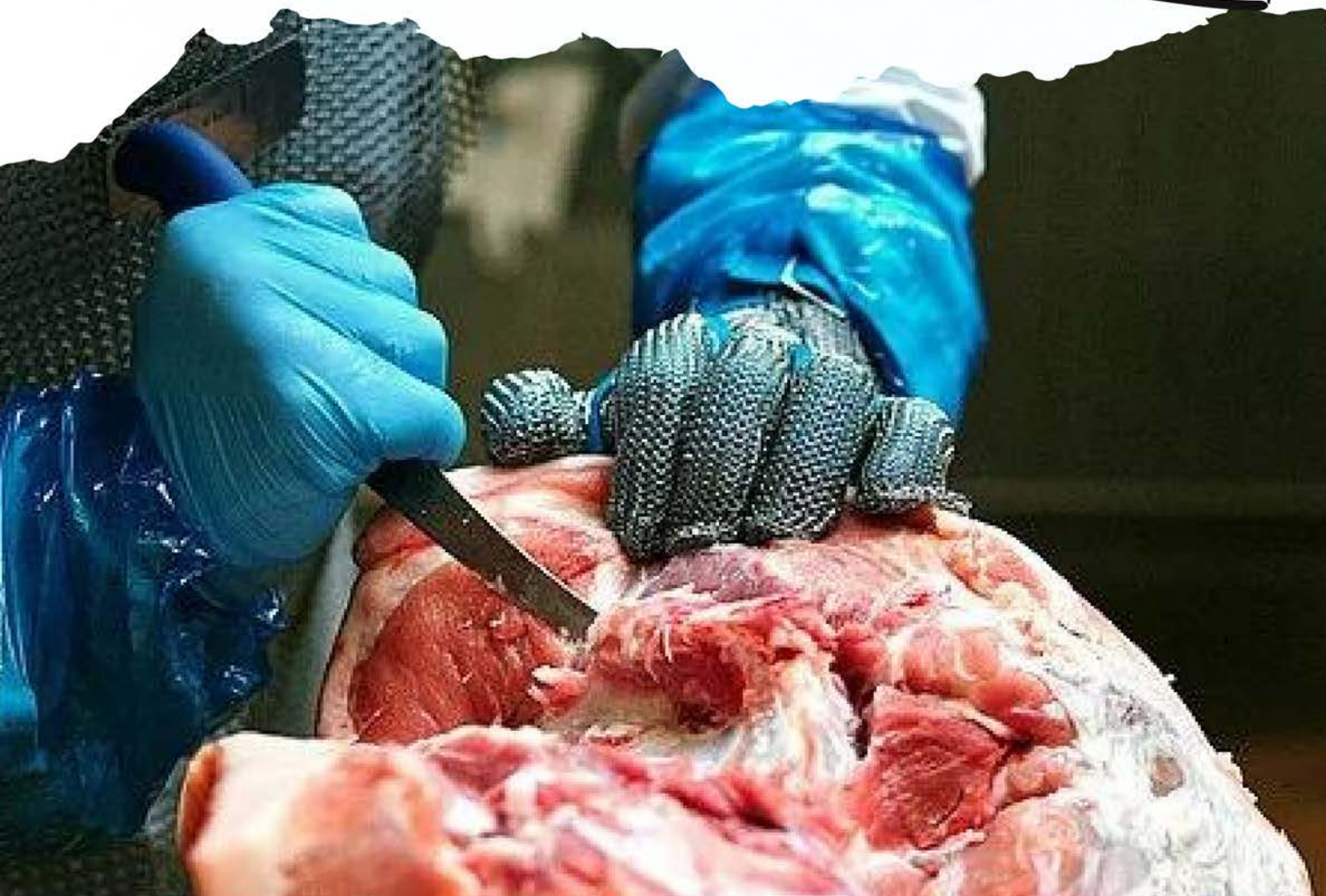
MUST - HAVE STEAK KNIFE AND BONING KNIFE SET

DSPM3

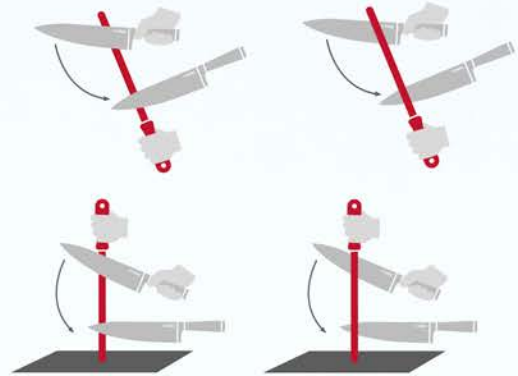
Contains:

D8238526 10" Ergo Grip Butchers Steak Knife (red)

D8298215 6" Ergo Grip Butchers Curved Semi-flexible Boning Knife (red)



YOUR CHOICE OF SHARPENING STEEL CUTS



D7650428
11" Multi Cut Steel



D7655130
12" Rnd Regular Steel
D7655330
12" Oval Regular Steel



D7755130
12" Eurocut Rnd
Regular Steel



D7317130
12" Regular Steel
Non Slip Handle
D7317135
14" Regular Steel
Non Slip Handle



ZFN1250
12" Oval Regular Steel
ZFP1250
14" Oval Regular Steel



D7136000
Whetstone



D9005000
Pickle Pump



D7598330
12" Oval Dikoron Steel

**GOOD QUALITY TOOLS NEED CARE.
THIS INCLUDES REGULAR SHARPENING.
NO BUTCHER SHOULD BE WITHOUT A GOOD
SHARPENING STEEL OR KNIFE SHARPENER.
THE MORE OFTEN YOU SHARPEN YOUR KNIVES,
THE LONGER THEY WILL STAY SHARP WITH
MAXIMUM EDGE RETENTION.**

EASY USE RAPID STEELS



Our Rapid Steel features an ergonomic design for a better and safer grip. Thanks to the robust tension springs and the stainless steel sharpening rods, maintenance and care are easy and inexpensive. The mechanics of the device are safely and hygienically protected in a locked mechanism box.



D9008400
Magneto Steel Hyper Drill
Also available in polish D9008500



D9008100
Rapid Steel Hyperdrill (Fine Cut)
Also available in polish D9008000



D9008600
Silver Steel Hyperdrill (Fine Cut)
Extension handle also available



RK99701
Stainless Steel Knife Sharpener



D9008200
Master Steel Hyperdrill (Fine Cut)
Also available in polish D9008300

KNIFE SHARPENER MAGNETO STEEL

D9008400

Magneto Steel Hyper Drill

SHARP KNIVES IN A FLASH

A simple drawing motion leads to the optimum cutting edge. In addition, the integrated magnets guide the knife into the sharpening unit with angular accuracy. The result is a precise cutting edge with an optimum bracket. Another positive side effect is that the abrasive dust sticks to the magnets.



**BEST
CHOICE**



SHARPENING MADE EASY

D9805000 RS 150 DUO Grinding and Honing Machine

- This two-step process machine provides both grinding and honing
- Diamond coated wheels gives quick grinding
- Ceramic honing stone produces a fine edge
- Effective and fast sharpening
- Belt driven no need for water cooling
- Reduced knife consumption
- Safe and easy to use Increased throughput due to sharp knives



Grinding
Wheels and
spare parts
in stock

D982103482 Grinding Wheels set for RS75/150



SHARPENING MADE EASY



D9805000

RS 150 DUO Grinding and Honing

This two-step process machine provides both grinding and honing. Its diamond coated wheels gives quick grinding, while the ceramic honing stone produce a fine edge. Suitable of all a butchers knife sharpening needs.



D9806000

RS 75 Grinding Machine

Small sharpening machine for butchers. Effective sharpening with minimal knife consumption. Fast, safe and efficient. Easy to operate. Long wearing diamond coated sharpening wheels.

Grinding
Wheels and
spare parts
in stock

D982103482

Grinding Wheels set for RS75/150

D982090251

Honing Stones RS150 SM110/111



D9820000

**SM-110 Water Cooled Grinding
and Honing Machine**

Holding magnets for grinding angle. Low knife consumption grinding. Reversible grinding wheels.



D9821000

**SM-111 Water Cooled Grinding
and Honing Machine**

Holding magnets for grinding angle. Low knife consumption grinding. Reversible grinding wheels. Honing wheels. Buffing/polishing wheel.

Grinding
Wheels and
spare parts
in stock

D982090029

Grinding Wheels for
SM110/Sm11

GROW YOUR BUSINESS MASTER BUTCHER STAND



MORE PROFIT FOR THE MASTER BUTCHERS



DSPM3
Butchers Knife Kit
Contains:
D8238526 10" Ergo Grip Butchers Steak Knife (red)
D8298215 6" Ergo Grip Butchers Curved Semi-flexible Boning Knife (red)



D8570009
ProDynamic Kitchen Knives Set of 3



D85700102
Knife & Peeler Set



D8570004
ProDynamic Kitchen Knives Set of 3



D8570003
Utility knives Set of 4



D8522000
Utility Knife Retail Display Box, of 40 Purple/Turquoise



D8523000
Utility Knife Retail Display Box, of 40 Apple Green/Pink

Grow your business

Think Bigger – McDonnells has the Best Retail Sets for every Kitchen.



SAWS AND BLADES

Large volume heavy duty Bandsaw Blades

This (AKH) series of Bandsaw Blades has the strength to stand up to the rigors of high volume, high feed, heavy duty operation. Long lasting, durable hardened tipped blade. Available in imperial and metric sizes to suit all makes and models of Bandsaws. (minimum order quantities may apply)

Blade Sizes

- AKH91 AKH154
- AHK98 AHK2910
- AHK112 AHK2930
- AKH124 AHK3307
- AKH126 AHK3607

Other sizes available on request.

Biro and butcher boy band saw service kits available.



KAM-LOK Professional Hand Saws

Featuring the original Kam-Lok quick change lever. Hand crafted from the finest grade stainless steel, with a solid, high strength polymer handle.

Featuring the original Kam-Lok quick change lever. Hand crafted from the finest grade stainless steel, with a solid, high strength polymer handle.

Saws Replacement Blades

- | | |
|-------------------|-------------------|
| AHS17 17.5" Frame | AHB17 17.5" Blade |
| AHS20 20" Frame | AHB20 20" Blade |
| AHS22 22" Frame | AHB22 22" Blade |
| AHS25 25" Frame | AHB25 25" Blade |



Replacement handles available 8022

DOUBLE-CUT Mincer Knives and Plates

The Atlanta SharpTech DOUBLE-CUT, plate and Knife System is made from high grade steel, for long life and durability.

Mincer Knife Sizes

A12DCK

Mincer Knife Sizes

A22DCK

Mincer Knife Sizes

A32DCK

Size 12 Mincer Plates

- A12DCP1 - 3.5mm 1/8"
- A12DCP2 - 5mm 3/16"
- A12DCP3 - 9mm 3/8"

Size 22 Mincer Plates

- A22DCP1 - 3.5mm 1/8"
- A22DCP2 - 5mm 3/16"
- A22DCP3 - 9mm 3/8"

Size 32 Mincer Plates

- A32DCP1 - 3.5mm 1/8"
- A32DCP2 - 5mm 3/16"
- A32DCP3 - 9mm 3/8"

Available to suit American and European makes of mincers
Other sizes available on request.



Care of Mincer Knives and Plates



User guide to obtaining top performance from Atlanta SharpTech, DOUBLE-CUT, Mincer Knives and Plates.

- 1 Never run grinder dry**
A dry plate can heat up to a red hot 1800°F / 982°C within three minutes. Always have meat in the hopper and lubrication on the plate and knife cutting edges.
- 2 Always match cutting edges**
Always use the same plate and knife together. Always tighten bolts holding machine head and gear box **first**. Then install plate, knife and end ring. **Never tighten end ring first**.
- 3 Never over tighten the end ring**
This only creates excessive friction and heating which eventually leads to plate and knife breakage and possible damage to the grinder.
- 4 Clean frequently and thoroughly**
Be sure to remove all meat buildup from the plate surface and edge and also from its seating area on the grinder ring so it will fit perfectly. Clean threads on the head so the end ring will tighten easily. Then, before operating, **always lubricate plate and knife with our food grade oil (S403) or meat fat**.



NEW

PREMIUM SAFETY FOR BUTCHERS

EXTRA COMFORT

NEW
products



WB950

Slipper LOW safety

Light and very comfortable premium safety shoe

- Composite protective toe cap (metal-free)
- Upper: water resistant and breathable
- Lining: antibacterial and breathable
- Sole: PU / PU with shock absorbing, non-slip
- Insole: ergonomic, antistatic and removable
- Sizes: 36 - 48
- Colours: Upper material: white | Sole: blue



S064N

Knife Pouch

Perfect for holding Steak Knives and Boning Knives.

- Made of special plastic components
- Robust material for long durability
- Safe and hygienic
- With removable and disassembled plastic inserts
- Sterilisable, easy to clean



S067N

Butchers belt with lock and metal chain/snap hook

- Made of TPU
- Robust material for long durability
- Safe and hygienic
- With metal chain/snap hook for sharpening steel
- Sterilisable, easy to clean

NECKBAND WEARING SYSTEM

NEW



WMSRAHW10005

Heavy Duty White Apron
90x120mm

Heavy Duty White and Blue Apron

Light and very comfortable

The traditional meat apron in heavy and robust design for intensive requirements. Particularly suitable for butchers.

- Made of polyester fabric coated on both sides with NBR-rubber
- Material: medium-heavy
- Open edge or hemmed
- Washable
- Permanently flexible
- Waterproof
- Resistant against animal oils and fats, strong detergents and some acids and alkaline liquids
- Heat resistant



WMSRAHB10205

Heavy Duty Blue Apron
90x120mm

- firmly roasted and additionally sewn neckband on both sides made of NBR material
- with metal eyelets

APRONS, HATS, COATS AND GLOVES



WMLAN
Apron Twin Stripe 90x100cm
Available in Red , Navy, Green and
Blue.



WMSRAF
Blue Rubber Apron 48"



WMR40203
Butchers Nylon Apron NEW Style 70
X 110CM
Available in Printed Red , Navy and
Blue.



WMSWC
Plain White Coat
Available in different sizes. S36-S48
Special Sizes on Request.



WMCH
Finger Fix
Pack of 100



WD720
Cut Resistant Glove
A versatile cut protection glove - with innovative
high-performance fibres, this glove is extremely
robust and durable.

- Made of high-tech yarns with stainless steel core
- Free from glass fibers
- Extra long cuff
- High wearing comfort
- Good tactile sensitivity



WMH110
White Trilby Hat
WMH110B
Black Trilby Hat



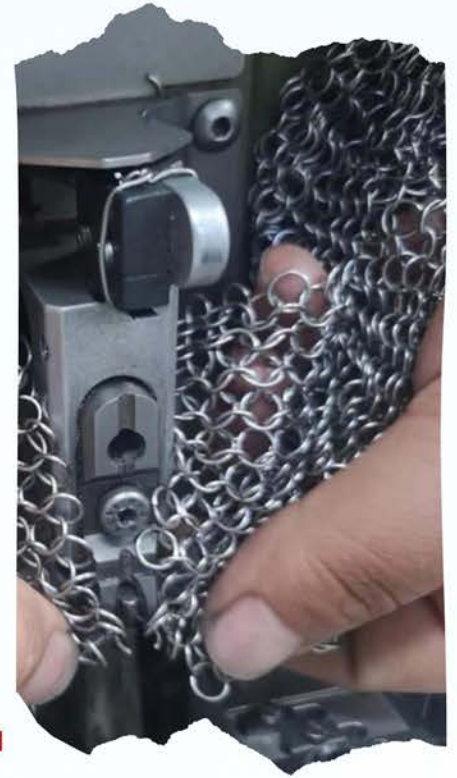
METAL MESH GLOVES WITHOUT CUFF

meshFlex® Metal ring mesh gloves STANDARD made of stainless steel ring mesh with replaceable TPU plastic strap and detectable stainless steel ring mesh.

The ErgoFitSystem offers maximum wearing comfort and, thanks to the smaller stainless steel ring mesh (RingØ: 3.8 mm) compared to other gloves, optimum safety against stab and cut injuries.

The STANDARD model is available in different cuff lengths. The proven and high-quality press-stud fastener makes the glove easy to put on and take off.

In addition, the TPU closure strap can be easily replaced (without tools). This also allows the glove to be turned quickly and easily for left-handers.



WMCG810

Chainmail Glove
Plastic Strap
all sizes available

- | | |
|--------|-----|
| Olive | XXL |
| Orange | XL |
| Blue | L |
| Red | M |
| White | S |
| Green | XS |
| Brown | XXS |

CASH SPECIAL STUNNER

FREE
STUNNER CHECK
CERTIFICATE of Calibration
with your next service



TAS

CASH Special

.22 Ergonomic Pistol shaped design, trigger operated stunner suitable for use on all animals, porcine, ovine, bovine. "Rolling Block" firing mechanism provides effective safety.

(.25 Calibre available).

Box of 1000

.22 Cartridge Range				Species	
Code	Colour	Nominal Grainage	Suggested Use		
TASPK	Pink	1.25 GRAIN	For small animals lambs and pigs		
TASP	Purple	2.5 GRAIN	For light cattle and pigs under 100kg		
TASG	Green	3 GRAIN	For average sized cattle and pigs over 100kg		

Repair Service Available



T812
Flange Washer



T811
Stop Washer



T816
Buffer (pack of 8)



SPECKLED BLACK KATA CROKS



ICONIC KATA RANGE



KATA COLLECTION

RECOMMENDED

The stand comes complete with :

2 x Kata Crock 175x520x70mm GTKT4228

1 x Kata Crock 260x345x40mm GTKT4236

1 x Kata Crock 260x345x70mm GTKT4226

1 x Kata Crock 260x345x100mm GTKT4216

2 x Kata Crock 175x260x100mm GTKT4212

Size : 780x695mm



MASTER BUTCHER STAND



Plexiline System Master Butchers Dishes

The stand comes complete with :

4 x Plexiline Dishes 280x280x50mm XD28285

2 x Plexiline Dishes 280x280x20mm XD2828

6 x Plexiline Dishes 280x210x50mm XD28215

3 x Plexiline Dishes 280x210x20mm XD2821

Size : 840x1400mm



MIX & MATCH PLEXILINE

Plexiline System Master Butchers IDEAS

The stand comes complete with :

2 x Plexiline Dishes 420x280x20mm XD4228

2 x Plexiline Dishes 420x280x50mm XD42285

2 x Plexiline Dishes 280x210x50mm XD28215

2x Plexiline Dishes 280x210x20mm XD2821

Size : 840x840mm

RECOMMENDED



PLEXILINE CORNER DISPLAY UNIT 9

XDQ26265
Top Quad Dish (1)
260 x 260 x 50mm

XDQTRIR
Right Corner Dish for Quad (1)
300 x 500 x 50mm

XDQ26225
Lower Quad Dish (4)
265 x 50mm 20°

XDQTRIL
Left Corner Dish for Quad (1)
300 x 500 x 50mm

XDQ26455
Mid Quad Dish (2)
265 x 50mm 45°

XFTB0333
Display Step Quadrant (1)
790 x 790 x 65mm



Plexiline Quarter Circle Display



TRADITIONAL STAINLESS STEEL TRAYS AND DISHES

The stand comes complete with :

4 x XSST290210

2 x XSST5821

2 x XSST16

Size : 780x695mm

Other sizes available



MELAMINE FRAME PLATTERS

NEW



Highlight your products with our great new products
Melamine Frame platters !

Designed for fresh food areas , the elevated profile prevents liquid from spilling over.

Silicone feet are provided to prevent skating in the counter!
Three colours available.



- GTCN2311B**
Urban Black Melamine Dish 280 x 210 x 50mm
- GTCN2318B**
Urban Black Melamine Dish 420 x 280 x 50mm
- GTCN2321B**
Urban/Black Melamine Tray 280x210x21mm
- GTCN2328B**
Urban/Black Melamine Tray 420x280x21mm



GOURMET ENAMELWARE, DISHES AND PANS

HOT
counter



RWB00496
Dish (1lt)
260 x 170 x 48mm Colour:
black/cream

RWB0050
Dish
290 x 180 x 50mm Colour:
black/cream

RWB0382
Deep Pan with Handles
Ø 240 x 97mm Colour black/cream

RW060322
Round Pan with Handles
Ø 300 x 57mm Colour: black

RW060319
Round with Handles
Ø 300 x 57mm Colour: red/ black

RW060222
Round Pan with Handles
Ø 260 x 46mm Colour: black

RW060219
Round Pan with Handles
Ø 260 x 46mm Colour: black

RW060122
Round Pan with Handles
Ø 240 x 42mm Colour: black

RW038322
Deep Pan with Handles
Ø 300 x 125mm Colour: black

RW038222
Deep Pan with Handles
Ø 240 x 97mm Colour: black

RW038122
Deep Pan with Handles
Ø 200 x 93mm Colour: black



VINTAGE FOOD BOARDS



XPV404
Paddle Vintage Stone Board
400 x 200mm



XPV402
Pebble Vintage Stone Board
300 x 280mm

XPV11
1/1 Vintage Stone Board
530 x 325mm



XPV403
Egg Shaped Vintage Stone Board
400 x 300mm

XPV12
1/2 Vintage Stone Board
325 x 265mm

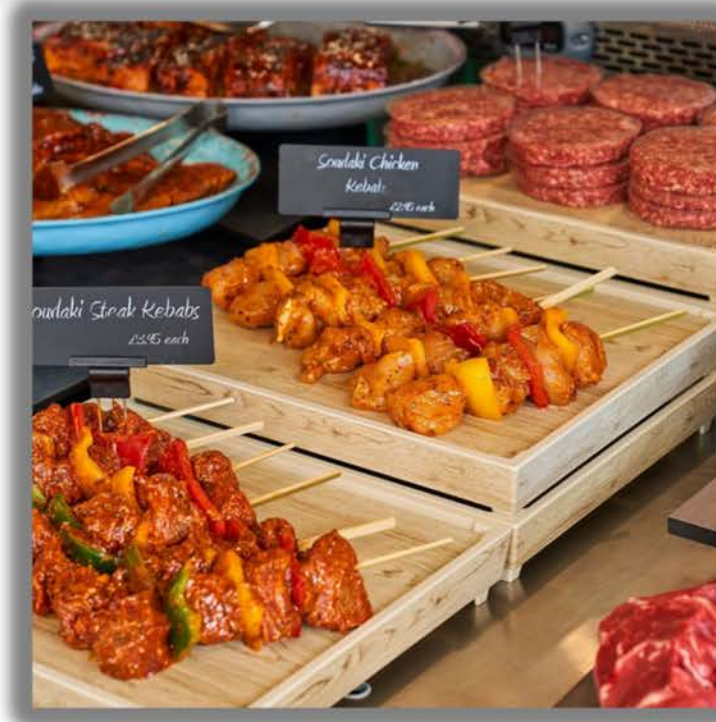
XPV200300
Vintage Stone Board
200 x 300mm



XPVR300
Round Vintage Stone Board
Ø 300mm

- Wood effect textured surface
- Safe for hot plates and hot lamps up to 140°C
- Safe for fridges and chill units to minus 40°C
- Dishwasher safe

COUNTER RISERS



GTB36
Three Step Riser Unit
750 x 600 x 90mm

GTB37
Three Step Riser Unit
750 x 300 x 90mm

XD500
Three Step Riser Unit
500 x 800 x 80mm

XD600400
Three Step Riser Unit
600 x 400 x 120mm



GTWD3412
Tura Melamine Wood Effect Crate Riser 1/2
Black or white available



GH114
Silicon Riser
Ø 90 x 45 x 30mm
Colours: black, white

GH117
Universal Riser
119 x 119 x 50mm
Colours: black, white

GH119
Pedestal Stand
170 x 170 x 100mm
Colours: black, white

IRELAND'S BEST MARINADES

Marinades give a unique flavour to meat, fish and vegetables. They refine meats, give flavour and enhance the appearance of meat products.

In the butcher's trade, meat refinement is an important convenience factor. It has also become essential for professional and amateur cooks.

**Reasons why
we are the best marinade supplier:**

- ✓ Excellent taste
- ✓ Great variety
- ✓ From chilli-hot, to piquant, fruity and fresh
- ✓ Best meat refinement Optimal marinade gloss
- ✓ Easy to handle and efficient to process
- ✓ High yield & no loss of meat fluids
- ✓ Colour stability
- ✓ Meat does not dry out



BEST SELLING MARINADE

Ireland's
Best



Smoky Spice-n Whiskey Marinade QS132

A blend of Cajun spices and Bourbon Whiskey. Our Smoky Spice-n Whiskey Marinade will soon become your customers' favourite. It is a classically refined sauce with a mouth-watering flavour combination of two exuberant ingredients.

Made with only the finest rapeseed oil to create a remarkable product designed to stand out in your butchers counter displays.



BEST MARINADES



Tomato & Pepper
Water based tangy red marinade with visible herbs.
Best for Chicken
QS102



Peeking
A deep red marinade with lots of herbs and spices.
Best for Beef
QS113N



Pepper & Wild Garlic
A ready to use marinade with garlic, pepper & onion.
Best for Steaks
QS511N



Char-Sui
Flavours of spices, caramel sugar and garlic.
Best for Pork & Chicken
QS134



SMOKY SPICE'N WHISKEY
Delicious blend of Cajun spices and Bourbon Whiskey.
Great on Beef and Lamb
QS132



Spanish Harbour
Old traditional marinade with garlic and Spanish flavour.
Best for Potatoes
QS119N

BEST MARINADES



TEX MEX

Oil based marinade with Mexican Spices.

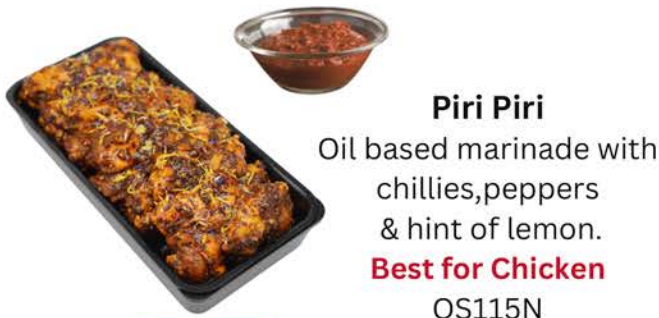
Best for Veggies & Beef
QS110



Greek Passion

Spicy brown marinade with Greek style spices & herbs.

Best for Lamb
QS130N



Piri Piri

Oil based marinade with chillies,peppers & hint of lemon.

Best for Chicken
QS115N



Chilli Willi

Oil based blend of sweet spices with chillies & peppers.

Best for Lamb
QS123



Argentinian Fire

A deep rustic colour with Argentinian Spices.

Best for Ribs
QS118N



Sicilian Lemon & Garlic

A Mediterranean marinade with garlic and herbs.

Best for Chicken & Fish
QS515

IRELAND'S BEST BURGER MIX

FX400

Burger MIX
(Box 450g x 24)

A highly sought-after product by experienced butchers, our Burger Mix creates a mouth-watering burger especially when paired with beef or game. This is a pink-tinted coloured mix that has tasty notes of savoury, spice, nutmeg and cayenne.

GF Burger Mix Available : FX700 Stroganoff Burger Mix



THE SUPREME BURGER

QM203

Burger Supreme
(Box 460g x 24)

The burger has been a success story in recent years and is probably one of the most popular products made from minced meat. Ready-made minced meat patties and buns also make for some delicious burger creations for Master Butchers.

Burger patties should not be missing from your offer. And we deliver the right seasoning for your popular minced meat products! Order a minced meat seasoning for your specific needs now!



BURGER MIXES



STROGANOFF BURGER MIX
FX700



Our Stroganoff Burger Mix is a necessity to create the perfect flavour-packed, juicy, rich burger. The mix has been packed with herbs, onion, peppers and spices such as paprika and garlic to add to its incredible flavour.
(Box 450g x 24)



GF BURGER MIX
FX300



A meaty savoury flavour Burger Mix with rounded onion notes.
Light brown coloured powder.
(Box 450g x 24)



BURGER SUPREME
QM203

The burger has been a success story in recent years and is probably one of the most popular products made from minced meat. Ready-made minced meat patties and buns also make for some delicious burger creations.
(Box 460g x 24)



BURGER MIX
FX400

A highly sought-after product by experienced butchers, our Burger Mix creates a mouth-watering burger especially when paired with beef or game. This is a pink-tinted coloured mix that has tasty notes of savoury, spice, nutmeg and cayenne.
(Box 450g x 24)



PREMIUM PORK POULTRY
BURGER MIX FG210

A tasty versatile and easy to use Burger and Grillstick complete mix combining subtle notes of herb and onion with added cracked black pepper.
(10kg)
Available in 2.5kg **FG118**

CHICKEN BREADING COATING



FW501 - 10KG



FW548 - 2KG



McDonnell's Chicken Breading System is our leading selling chicken breading. Off white powder with visual black pepper and chilli flakes. Savoury, spicy with a lemon pepper note. Butter Mix also available

FW54810 - 10kg tube

FW548 - 2kg

- Available in 10 kg tubs
- No hydrogenated vegetable fat
- No artificial colourings or flavourings

BEST GLAZES



Garden Mint Glaze
FG116(2.5kg)



Chinese Glaze
FG106(2.5kg) FG206(10kg)



Peppersteak Glaze
FG107(2.5kg) FG207(10kg)



Double Smoke Glaze
FG125(2.5kg) FG225(10kg)



Hot & Spicy Glaze
FG105(2.5kg) FG205(10kg)



Italian Glaze
FG114(2.5kg) FG215(10kg)



Garlic Butter Glaze
FG115(2.5kg)



Smokey B.B.Q Glaze
FG100(2.5kg) FG200(10kg)



Sticky Maple Glaze
FG121(2.5kg) FG221(10kg)

BEST GLAZES



Buffalo Glaze
FG133(2.5kg)



Piri Piri Glaze
FG109(2.5kg) FG209(10kg)



Maple and Chilli Glaze
FG129(2.5kg)



Cajun Glaze
FG211(2.5kg) FG207(10kg)



Premium Pork & Poultry Burger Mix
FG118(2.5kg) FG210(10kg)



Kofta Kebab Mix
FG119(2.5kg)



Grillstick Mix
FG117(2.5kg)



Salt and Chilli Glaze
FG131(2.5kg)



Lemon and Pepper Glaze
FG108(2.5kg)



Sweet Chilli & Lime Glaze
FG103(2.5kg)

CHILLI & CORIANDER SPICE BAG MIX



Chilli & Coriander Spice Bag Mix

FG226(10 kg)

Chilli and Coriander SPICE BAG Mix - a tasty, versatile and easy to use spicy coater.
A complete crumb with a real good Chilli kick, ideal for use on poultry and fish.

- Available in 10 kg tubs
- No hydrogenated vegetable fat
- No artificial colourings or flavourings

SEASONINGS & SPICES & HERBS

QM202 LAMB BURGER SPICE

510g per pack. Box = 20 packs
With a hint of mint mix, is ideal for a lean lamb burger. Use mint glaze to enhance flavour.

QM200 CONTINENTAL SPICE

A fine blend of spices and herbs, which is used as a carrier of flavours when used in conjunction with Raffine Oil and other Indasia spices. 1 KG BAG

QM230 KOFTA MIX SPICE

Ingredient used to make mince kebabs, bind the meat to the kebab stick. Works best with beef and lamb. Kebab can be decorated using Indasia decorating mixes
2KG BAG

QM209 CANADIAN STIR FRY SPICE

A fine blend of spices and herbs, which is used as a carrier of flavours when used in conjunction with Raffine Oil and other Indasia spices. 1 KG BAG

QM215 SPECIAL BBQ SPICE

BBQ seasoning salt with a taste of paprika, coriander, chilli, onion, nutmeg and fennel
1KG BAG

FM200 METEX

Metex Cure for Corned Beef & Ribs (160g Packet x 12)
Recommended Usage: 1. Metex solution: contents of the pack (160g) added to 1.3kg water. Stir well. 2. Salt pickle: 2kg salt added to 18kg water. Add Metex solutions (as (1) above) to Salt pickle (as (2) above).

HERBS

- FA4984 DRY CURE 5KG
- FA6016 MIXED HERBS
- FA6007 KIBBLED ONION 1KG
- FA6027 THYME
- FA6041 PARSLEY
- FA6060 SAGE 1KG
- FB005 RUSK 8KG
- FB007 PORK CHOP SEASONING 5KG
- FX402 SAGE AND ONION STUFFING 20KG



FDF925
Mix of dried flowers



FDR522
Freeze dried raspberries



BEST TRUFFLE CAKE PRESS

S027P

Truffle / Cake press

3" White with centre hole.

Create an unique butcher counter!
This truffle press which cleverly indents your
burgers to allow you to fill them with
delicious mouth-watering flavours and
ingredients such as cheese.





Burger Presses



- S027**
Round Shape
5" Large 130g / Ø 120mm
 - S027**
Round Shape
4" Medium 100g / Ø 100mm
 - S027M**
Round Shape
2.5" Small 60g / Ø 60mm
- Other shapes available

S027
Heart Shape
100g / Ø 100mm



S027M
Heart Shape
Small / Mini

S027
Flower Shape
100g



S027M
Flower Shape
Small / Mini

S027
Triangle Shape
100g



S027
Square Shape
100g / 100 x 100mm



S027M
Square Shape
Small / Mini 50 x 50mm

S027
Steakette Shape
120g



S027
Teddy Bear Shape
120g



S027P
Meat Truffle
135g



S027
Mini Mouse Shape



Burger Discs



S004N
Wax Burger Discs
100mm / 4"
Quantity: 3,000
Colour: white



S145
Pink Round Burger Discs
100mm / 4"
Quantity: 3,000
Colour: pink

S146
Pink Round Burger Discs
120mm / 5"
Quantity: 2,000
Colour: pink

S151
Pink Round Burger Discs
150mm / 6"
Colour: pink



S156
Round Burger Discs
100mm / 4"
Colour: black

S156H
Burger Disc round with hole
100mm / 4"
Colour: black



S058
Round Burger Discs (500g)
120mm / 5"
Colours: black



S062
Round Deckled
Burger Discs (500g)
120 x 120mm
Colours: green



Wrapping Solutions



McDonnell's pink wrapping sheets are ideal for wrapping or interleaving fresh meat, salami, hams, cheese, dairy products, fish, pasta and a whole lot more.

The pink sheets can be cut to different sizes. They are available in four standard sizes to suit various uses.

S147
1/8 245mm x 350mm
1,850 sheets per box.
Ideal for wrapping meats and ham sliced for daily selling direct to the customer. They preserve the sliced product and prolong freshness

S148
1/4 350mm x 500mm
1,850 sheets per box.
Ideal for wrapping roasts, rabbits, liver, heart and other types of meat with special requirements. Also suitable for wrapping pieces of meat in cold storage

S149
1/2 500mm x 700mm
2,150 sheets per box.
Ideal for wrapping and interleaving chicken, rabbits and other large pieces of meat

S150
1/1 700mm x 1000mm
1,075 sheets per box.
Ideal for wrapping larger pieces of meat or lining boxes



- Prolongs freshness & colour Preserves
- Ideal for lining boxes
- Easy wrapping of meat Gift/Presentation of special cuts of meat

SQUEEGEES AND HANDLES

MADE IN DENMARK



S28600

One-Piece 600mm Super Hygienic Squeegee available in a range of colours



HACCP COLOURS
CHECK AVAILABILITY



S28603

600mm Squeegee with Black Rubber insert



S29904

One Piece, Super Hygienic Handle measuring 1,500 x 32mm



S29804

Standard Aluminium Handle measuring 1,500 x 25mm

BEST HYGIENE EQUIPMENT

MADE IN DENMARK



S80102 / S80101
Bucket, Polypropylene
Available in many colours.
9 litre / 15 Litre
Lids available



S10252
Brush Polyester (medium)
Available in many colours.
340x35x50mm



S80301
Dust Pan, Polypropylene
Available in many colours.
300x310mm



S10548
Churn Brush Polyester (Flagged)
Available in many colours.
225x45x25mm



S28600
Super Hygienic Squeegee
Available in many colours.
600mm



XD02090
Kentucky Mop
400g



X188390
Step on Pedal Bin (90l)
Available in many colours.
810(H) x 630(W) x 400 (D) mm



S29904
One piece Super Hygienic Handle
1500x32mm



D9001200
Block Brush with Handle

BRUSHES BROOMS SWEEPERS



MADE IN DENMARK



S21136
Sweeper Polyester (medium)
400 x 50 x 55mm



S23155
Broom Polyester (medium)
300 x 60 x 55mm



S26155
Broom Polyester (medium)
500 x 60 x 55mm



S21153
Deck Scrub Polyester (stiff) 400 x 40 x 30mm



S27187
Broom Polyester (very stiff)
600 x 60 x 65mm



S29904
One Piece Super Hygienic Handle

S29804
Standard Aluminium Handle
1,500 x 25mm



S28603
600mm Squeegee
With Black Rubber insert



HAND BRUSHES AND HYGIENE TOOLS

MADE IN DENMARK



S10215
Long Utility Brush Polyester (stiff)
410 x 45 x 40mm



S10467
Dish Wash Brush Polyester (flagged)
225 x 45 x 25mm



S10548
Churn Brush Polyester (stiff)
275 x 70 x 35mm



S10252
Brush Polyester (medium)
340 x 35 x 50mm



S80301
Dust Pan, Polypropylene
300 x 310mm



S54154
Round Hand Scrub
Brush Polyester (stiff)
Ø 120 x 40mm



S81900
Ergo Scraper
Polypropylene 3-sides
200 x 125mm



S15060
Nail Brush Polyester
(medium)
110 x 45 x 16mm



HACCP COLOURS
CHECK AVAILABILITY



S82125
Glazing Brush, Polyester (soft)
70mm



HYGIENE TOOLS

MADE IN DENMARK



S15105
Hand Scoop, Polypropylene (500g)
100 x 260mm



S15106
Hand Scoop, Polypropylene (750g)
138 x 310mm



S15107
Hand Scoop, Polypropylene (1,000g)
160 x 360mm



S15150
Hanging Clip (small)
Ø 22 x 32mm
S15151
Hanging Clip (large)
Ø 28 x 38mm



S80000
Wall Hook Nylon
60mm



XYW80
Single Piece Paddle with holes
1,260mm



XY61
Lobby Pan with Brush
1,260mm



S15104
Ergonomic One Piece Shovel (Large)
330 x 380 x 1,330mm

HYGIENE TOOLS

MADE IN DENMARK



S10776
Tube Brush Head Polyester S/S (medium)
Tube Brush Head and
Thread Ø 60 x 100 x 160m



S10772
Tube Brush Head Polyester S/S (medium)
Tube Brush Head and
Thread Ø 20 x 100 x
160mm



S10774
Tube Brush Head Polyester S/S (medium)
Tube Brush Head and
Thread Ø 40 x 100 x
160mm



S10750
Tube/Bottle Brush, Polyester (medium)
Ø 10 x 150 x 500mm

S10752
Tube/Bottle Brush, Polyester (medium)
Ø 20 x 150 x 500mm

S10754
Tube/Bottle Brush, Polyester (medium)
Ø 30 x 150 x 500mm

S10756
Tube/Bottle Brush, Polyester (medium)
Ø 40 x 150 x 500mm



S10713
Tube/Bottle Brush (with Tuft), Polyester (medium)
Ø 55 x 140 x 450mm

S10714
Tube/Bottle Brush (with Tuft), Polyester (medium)
Ø 65 x 160 x 500mm



S10784
Flexible Nylon Rod
Rods with Thread
1,500mm



XH146
Mop Holder and Handle



XD02090
Floor Mop (400g)



HACCP COLOURS
CHECK AVAILABILITY



X1221
Mop Bucket Combo
Colours: red, yellow, blue, green

STORAGE SOLUTION



XSK64175
Solid Stackable Container
600 x 400 x 175mm
Colours: red, white, yellow, blue, green



Container, Lid
and Trolley
sold separately



X2632
Brute Container
121.1 litre
Food Approved
Colours: grey, white, yellow

X2631
Brute Container Lid
Colours: grey, white, yellow

X2640
Brute Container Trolley
Colours: grey, white, yellow



X50SDOL
Dolly
400 x 600mm
Colours: red, blue, yellow



X60SDOL
Dolly
Colours: red



XMT1BP
Pickle Tank (305lt)
990 x 686 x 762mm

XMT21
Pickle Tank
600 x 310 x 528mm Lids available

STORAGE SOLUTION



XB600400120
Container
600 x 400 x 120mm



XB60040080
Container
600 x 400 x 80mm



XB60040060
Container
600 x 400 x 60mm
XB600400L
Container Lid



X3600
Ingredient Bin
(79lt)

STAINLESS STEEL HOOKS

Made from high grade stainless steel. Available to suit weights typical of the meat industry.

Easy to handle, smooth surfaces and high thickness.

Absolutely hygienic.



HSSW8
8" Swivel Hook (each)
210 x 9mm 120kg

HSSW10
10" Swivel Hook (each)
240 x 10mm 140kg

HSSW12
12" Swivel Hook (each)
300 x 12mm 180kg

HSS2
2" S/S Hook (box of 10)
60 x 3mm 25kg

HSS4
4" S/S Hook (box of 10)
80 x 4mm 40kg

HSS6
6" S/S Hook (box of 10)
160 x 6mm 70kg

HSS9
8" S/S Hook (box of 10)
200 x 9mm 120kg

HSS10
10" S/S Hook (each)
250 x 10mm 140kg

HSS12
12" S/S Hook (each)
300 x 12mm 180kg



HSSAG
A-Type S/S Gambol



HSSRS
Round Top Swivel
220mm 300kg



S034
Meat Grab Hook
Colour: Orange



HSSDH
12" Double Swivel Hook
320 x 230 x 10mm 140kg



SPECIAL PREMIUM TWINE

5 + 1 Premium Twine



Our Premium Twine is made from first class, high tenacity rayon yarn to produce a thin multi-purpose twine, made from continuous filaments, which gives the twine their considerable strength. Ideal for kitchen use and for meat preparation. The box has 5 white rolls and one coloured.

S0080R - 5 white rolls + 1 RED

S0080C - 5 white rolls + 1 RED & GREEN



S200BK
Black and White Twine



S0079
Rayon Premium Twine No 104
box of 10



S008104
Rayon No 104 Narrow Twine
box of 6



S0078
Rayon Premium Twine No 5
box of 10



S0075
Rayon Premium Twine No 5
box of 6



S0077
Rayon Premium Twine No 4
box of 10



S0074
Rayon Premium Twine No 4
box of 6



S190
Coloured Twine Mixed Pack
box of 10



S20010R
Red & White Premium Twine
box of 10

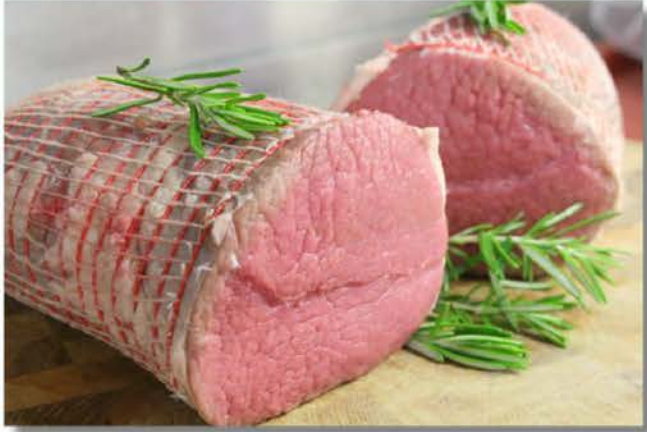


S200R
Red & White Premium Twine
box of 6

S195
Black Butchers Twine
box of 6



MICROMESH NETTING AND ELASTIC LOOPS



Micromesh Netting

Micromesh Netting offers superior performance when constant visual pattern and binding pressure is required. Suitable for roasting and boiling. Can be used for the packaging of smoked meats (Bacon and Ham) and roasts (Pork, Beef, Lamb and Poultry).



NR100M10.5
10.5" Red Micromesh Netting
100m

NR100M10.0
10" Red Micromesh Netting
100m

NR100M 9.0
9" Red Micromesh Netting
100m

NR100M8.0
8" Red Micromesh Netting
100m

NR100M7.0
7" Red Micromesh Netting
100m



NW100M10.0
10" White Micromesh Netting
100m

NW100M9.0
9" White Micromesh Netting
100m

NW100M8.0
8" White Micromesh Netting
100m

NW100M7.0
7" White Micromesh Netting
100m

Elastic Loops

Ideal for mini roasts and small portion stuffed meat products (chicken olives etc). They can also be used to truss dressed poultry ready for the oven.

S084
White Loop 140mm
3kg

S097
Red Coloured Loop 80mm
3kg
Red

S096
Red Coloured Loop 50mm
3kg
Red

Other colours available on request



TIME SAVER DUAL COOK-IN-BAGS



Cleaner, quicker cooking, every time

- Ready for the oven or microwave.
- Keeps in all those juices and flavours.
- Simple and Clean.
- Keeps the meat really tender.
- Cooks up to 220 degrees

BCV350450 - Size 350x450mm (pack of 100)

BCV300300 - Size 300x300mm (pack of 100)



PREMIUM MEAT SAVER PAPER



Keeps red meat looking fresh while on display and in the chiller.

S050
Meat Saver Paper
250 x 300mm
Quantity: 1,000
Colours: peach, black, green

S051
Meat Saver Paper
250 x 375mm
Quantity: 1,000
Colour: white

S598
Meat Saver Paper
250 x 373mm
Quantity: 1,000
Colour: black

Keeps red meat looking fresh while on display and in the chiller



4 different colours available



Peach White Green Black



- Saves time and money
 - Reduces waste
 - Meat retains moisture
 - Extends shelf life
 - Strong with a high tear resistance
- Can be cut to any shape or size

OLD TIME IRISH SAUSAGE MIX



KAM1639

Old Time Irish Sausage Mix

Our Old Time Irish Sausage Mix is a very savoury seasoning that gives an instantaneous burst of flavour. With instructions provided below, this seasoning is ready to provide you with a fantastic tasting sausage.

Method 1: Using a mincer

1. Mince all meat through a large holed plate, approx 10mm.
2. Add water and sausage mi, mix well until well integrated.
3. Re-mince through smaller holed plate, approx 5mm.
4. Fill into casings and link.

Method 2: Using a bowl chopper

1. Mince all meat through a large holed plate, approx 10mm.
2. Place all meat in bowl chopper and add sausage mix.
3. Chop on slow speed, adding water slowly until absorbed.
4. Chop on high speed, for two and a half mins or until desired texture is attained.
5. Fill into casings and link.

EDIBLE COLLAGEN CASINGS

- Clear appearance with high sheen and customer appeal .
- Consistent tender bite .
- Good machinability for high productivity on all filling systems .
- Yield and shape consistency, leads to controlled output .
- Hygienic and traceable .
- Very good cooking performance .
- Easy handlinking



Devro Machine Link

E210880
21mm Machine Casing
850m

E230880
23mm Machine Casing
576m

E260880
26mm Machine Casing
672m

E280880
28mm Machine Casing
595m



Devro Handlink Clear & Shine

E210150
21mm Handlink Casing
625m

E230150
23mm Handlink Casing
450m

E260150
26mm Handlink Casing
400m

E280150
28mm Hanklink Casing
350m

BEST SAUSAGE MIXES



Old Time Irish Sausage Mix

KAM 1639

1.16 KG / Box of 12



Complete Pork Sausage Mix

FX507

450g per pack / Box of 15



White Sausage Blend

QA101

818g per pack / Box of 18

Method 1: Using a mincer

1. Mince all meat through a large holed plate, approx 10mm.
2. Add water and sausage mi, mix well until well integrated.
3. Re-mince through smaller holed plate, approx 5mm.
4. Fill into casings and link.

Method 2: Using a bowl chopper

1. Mince all meat through a large holed plate, approx 10mm.
2. Place all meat in bowl chopper and add sausage mix.
3. Chop on slow speed, adding water slowly until absorbed.
4. Chop on high speed, for two and a half mins or until desired texture is attained.
5. Fill into casings and link.

SUNDRIES



S002
4 1/2 Lamb Skewers
Quantity: 1,000



S206
Grillsticks
250mm Ø 3mm
Quantity: 1,000



S210
Teppo Gushi Skewers
120mm

S209
Teppo Gushi Skewers
180mm

S208
Teppo Gushi Skewers
90mm



S016
Metal Tape Machine
S014
Red Tape 9mm
S01432
Premium Red Tape 9mm (32pack)
S017
Red Tape 12mm

S206
Grillsticks
200mm Ø 3mm
Quantity: 1,000



GTH20
Probe Wipes



S033
Liver Hook



S021
Saw Tension Lever
S022
Saw Handle



CB8043
Black Easydry Towel
800 x 430mm
Quantity: 50

CW8043
White Easydry Towel
800 x 430mm
Quantity: 50

SUNDRIES



D9510117
6" Carving Fork



GDR32
Red and Green 30"
Garnish with black base
(sold individually)



GG35
Deluxe Parsley Garnish
10" black base
(sold in boxes for 6)



S019
Plastic Meat Scraper



SP180
Pop up Timer for Meat
Quantity: 500



RPU975
Poultry Shears Rust Free
Other colours available



S053
Duracool Stainless Steel
Tongs 240mm
Available in yellow,
red, green and blue



S086
Portion Professional
Many sizes available



D9001600
Meat Tenderiser

S053L
Duracool Stainless Steel
Tongs 300mm
Available in yellow,
red, green and blue



S047
Aluminium Mince Scoop



S055
Stainless Steel Spoons
Slotted & Solid



S034
Meat Grab Hook
Orange



D9105923
Mincing Knife



D9000319
Brineometer



GT106
Large 310 mm
Colours: black, white

GT104
Large 250mm
Colours: black, white

COUNTER DISPLAY TICKETING



GK10020 / GK10050
Ticket Clamp 20/50mm



GK1000
Ticket Stand Melamine



S305
Tray Clip Plastic (10)



S318 B/W
Basket Clips



S129
S/S Clip Ticket Holder



SK301 Ticket Holding Stand (56mm)
SK302 Ticket Holding Stand (85mm)



S122
S/S Clip Ticket Holder (10)



S121
Bamboo Ticket Holder (10)



S111
Twin Spike Ticket Holder (10)



S112
MBI White Ticket with Spike (25)



SK134
Ice Spike Ticket Holder



S301 Ticket Holder Stand (50mm)
S302 Ticket Holder Stand (75mm)
S303 Ticket Holder Stand (140 mm)



GKB66
Nylon Ticket Pin 65mm (25)



S137
S/S Single Pin Ticket Holder (10)



GKB69
Ticket Holder Stand 95mm (25)



S138
Designer Ticket Stand Black or White

COUNTER DISPLAY TICKETING



S304
Twin Spike Ticket Holder (10)



S113
Swivel Ticket Holder (10)



S116
Swivel Ticket Holder



GK37
S/S Ticket Pin



S309
PT50 Small Ticket Stand



S360
S/S Ticket Stands (80mm)



S362
Metal Ticket Stand (Silver/Black)



SK119
Spring Clamp Ticket Holder



ST25380
Ticket Clip
(1pack =10)

ST18824
Spike Ticket
Card Holder
(1pack =10)

GKB1600
A6 Standing Blackboard
148 x 105mm

GKB1500
A5 Standing Blackboard
210 x 148mm

GKB1400
A4 Standing Blackboard
297 x 210mm



SK1500
Standing Blackboards with Oak Rim
(pack of three) 160 x 230mm



S132
Coloured Chalk Markers
(individual)

PLASTIC SHELVING AND PALLETS

- Modular
- Temperatures + 80°C to - 40°C
HACCP/ISO approved
- Easy Clean
- Fits into corners
- 200kg per metre capacity



Shelving Units

Standard lengths

100 cm
120 cm
150 cm
180 cm
200 cm

Standard widths

40cm
50cm
60cm

Standard Shelf height

35cm

Trolleys on wheels with containers

XRE4

Trolley on wheels
Comes with 4 Containers

XRE6

Trolley on wheels
Comes with 6 Containers

Other sizes available



Corner Shelving units

Contact us for available sizes



Floor Pallets

Standard lengths

100 cm
120 cm
150 cm
180 cm
200cm

Standard widths

40cm
50cm
60cm

- Free quotations for cold room measuring
- Free cold room shelving fitting design

FILLERS, SEALERS AND FLY KILLERS



MHSS
S/S Heat Sealer

S060
Heat Sealer Wires
(1pack =5)



MHWS
White Heat
Sealer

BFL450
Cling Film (1,500m)
450mm



MHB
Single Bar Heat Sealer



D9050900
9lt Sausage Filler

D9051200
12lt Sausage Filler

D9051500
15lt Sausage Filler



MBUR5
5" Burger Press



MPATTYO
Patty-o-Matic Easy Slider



MDCGX22
Date Code Genie Food
Labelling Machine

Learn how to
save time and
improve your
labelling

MASTER BUTCHERS BLOCKS

We are now supplying the best value for money butcher blocks.

Each butcher block can be used with an existing butcher block stand or bought with a brand new butcher block stand made from aluminium (for lightness and strength).

The butcher block is hard wearing and made to last, but as per all butcher blocks must be looked after. The butcher block must be cleaned down at the end of the day using butcher block cleaning methods.

All sizes available



CUTTING BOARDS AND STANDS

IWCB220S

Beech Square
220 x 220 x 120mm

IWCB220M

Beech Square
220 x 220 x 150mm

IWCB220L

Beech Display Block
220 x 220 x 180mm



ICB12

Hygienic Cutting Board
12' x 18' x 12mm
HCAPP colour coded
Can be made to measure

ICB24

Hygienic Cutting Board
18' x 24' x 12mm
HCAPP colour coded
Can be made to measure



ICBR1N

Plastic Cutting Board Holder



IM30013

Maple Round Cutting Block
Ø370 x 50mm

IM30006

Maple Round Cutting Block
Ø 460 x 90mm

IWCB220S

Beech Square
220 x 220 x 120mm

IWCB220M

Beech Square
220 x 220 x 150mm



IKR

S/S Knife Holder for Block



IWBR330W

Walnut Round Mini Cutting Block
Ø 330 x 330mm
different sizes available

Master
Butchers



McDonnell's
suppliers to the food trade



Master
Butchers

Butchers Tools

